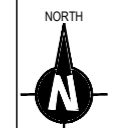
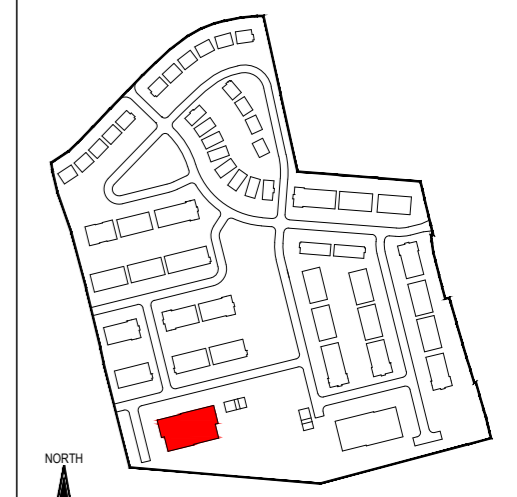
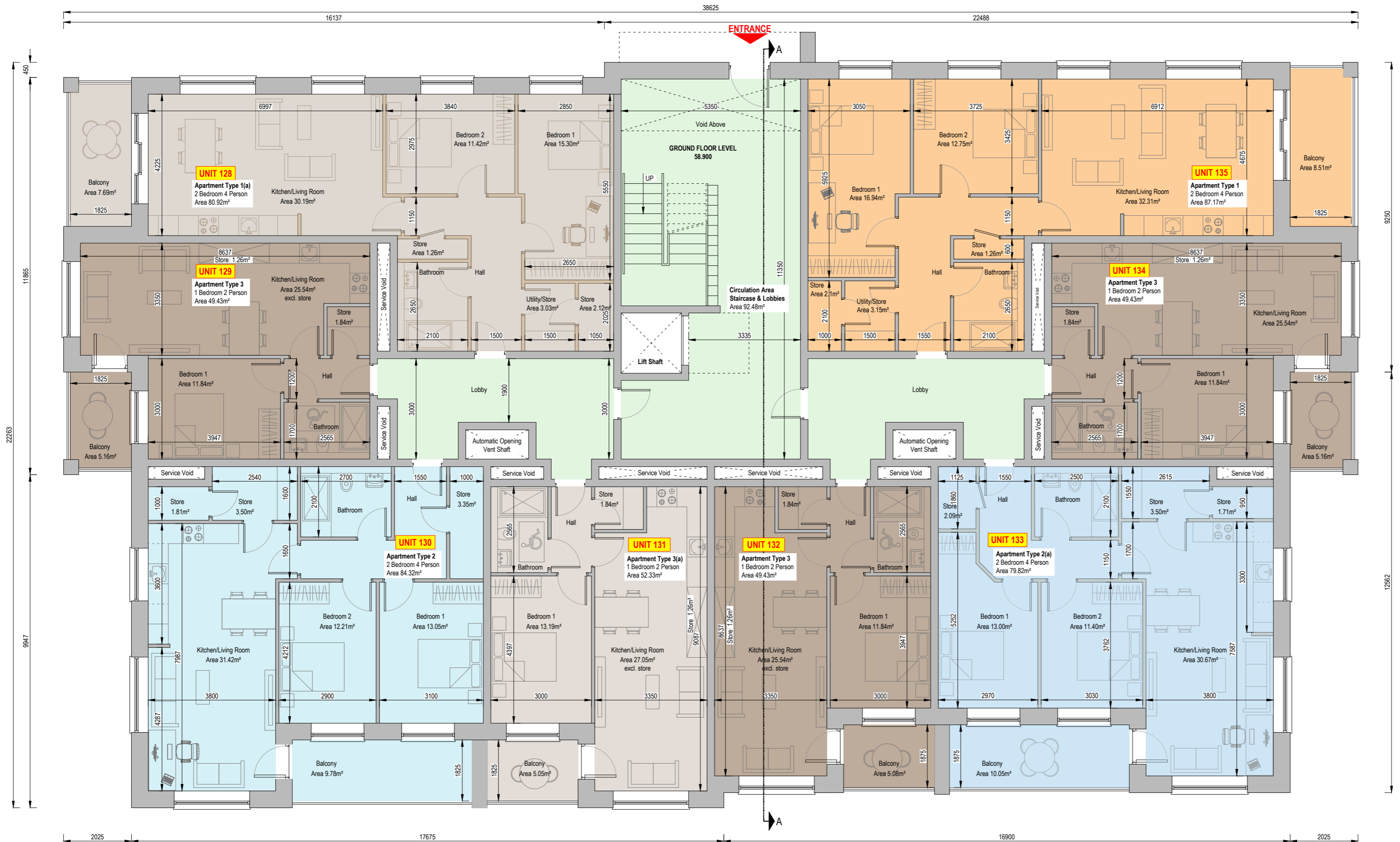


COPYRIGHT
THIS DOCUMENT AND ALL DATA CONTAINED HEREIN REMAIN THE PROPERTY OF O'DALY ARCHITECTS. IT IS SUPPLIED IN CONFIDENCE FOR EVALUATION PURPOSES ONLY UNDER THE CONDITION THAT SAME IS NOT USED, REPRODUCED OR TRANSMITTED IN ANY WAY TO OTHERS WITHOUT WRITTEN CONSENT.

DIMENSIONS
UNLESS OTHERWISE STATED, DIMENSIONS SHOWN ARE IN MILLIMETRES. NO DIMENSIONS TO BE SCALED FROM THIS DRAWING. ALL DIMENSIONS TO BE CHECKED BY THE CONTRACTOR ON SITE AND ANY DISCREPANCIES TO BE REPORTED TO THE ARCHITECT.



Key Plan
Scale 1:5000

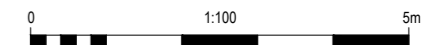


GROUND FLOOR PLAN
Scale 1:100
Total Ground Floor Area 670.63m²
Ground Floor Includes Units No's 129 - 136

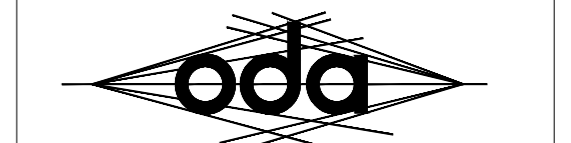


Taken from Planning Design Standards for Apartments
(Guidelines for Planning Authorities)
Appendix 1 - Minimum Floor Areas and Standards

	Required	2 Bedroom 4 Person Apartment			1 Bedroom 2 Person Apartment		
		Apartment Type 1	Apartment Type 1(a)	Apartment Type 2	Apartment Type 2(a)	Apartment Type 3	Apartment Type 3(a)
Gross Floor Area	73m ²	87.17m ²	80.92m ²	84.32m ²	79.82m ²	45m ²	49.43m ²
Aggregate Bedroom Area (2 x 11.4m ²)	23m ²	29.69m ²	26.72m ²	25.26m ²	24.43m ²	11.4m ²	11.84m ²
Storage incl. wardrobes	6m ²	6.51m ²	6.41m ²	8.66m ²	7.30m ²	3m ²	3.01m ²
Private amenity space	7m ²	8.51m ²	7.69m ²	9.78m ²	10.05m ²	5m ²	5.08m ²



THIS DRAWING SHOULD BE READ IN CONJUNCTION WITH THE APARTMENT QUALITY ASSESSMENT SCHEDULE DOCUMENT REF. 24004-AR-AQA



o'daly architects

1st Floor - Unit 13(B) - Mullaghboy Industrial Estate
Navan - County Meath - Tel: (046) 9021283
Mobile: (087) 0925233 - Email: ivan@odaly.ie



Client:
Loughglinn Developments Ltd.

Project Name and Address:
Proposed Large Residential Development (LRD) at "Crowpark 1st Division", Kildalkey Road, Trim, County Meath.

Project Stage:
Planning

Drawing Name:
Apartment Block A Ground Floor Plan

Drawn By: iod
Scale: 1:100 @ A2

Checked By: iod
Date: 04.06.2026

Drawing Number: 24004-AR-300
Revision: P01